



Thank you!

ACT  
AMERICAN COMMUNITIES TRUST

New Broadway  
East Community  
Association

PO Box 50160  
Baltimore, MD 21211  
410.989.1607  
[www.actimpact.org](http://www.actimpact.org)

# DREAM TEAM!



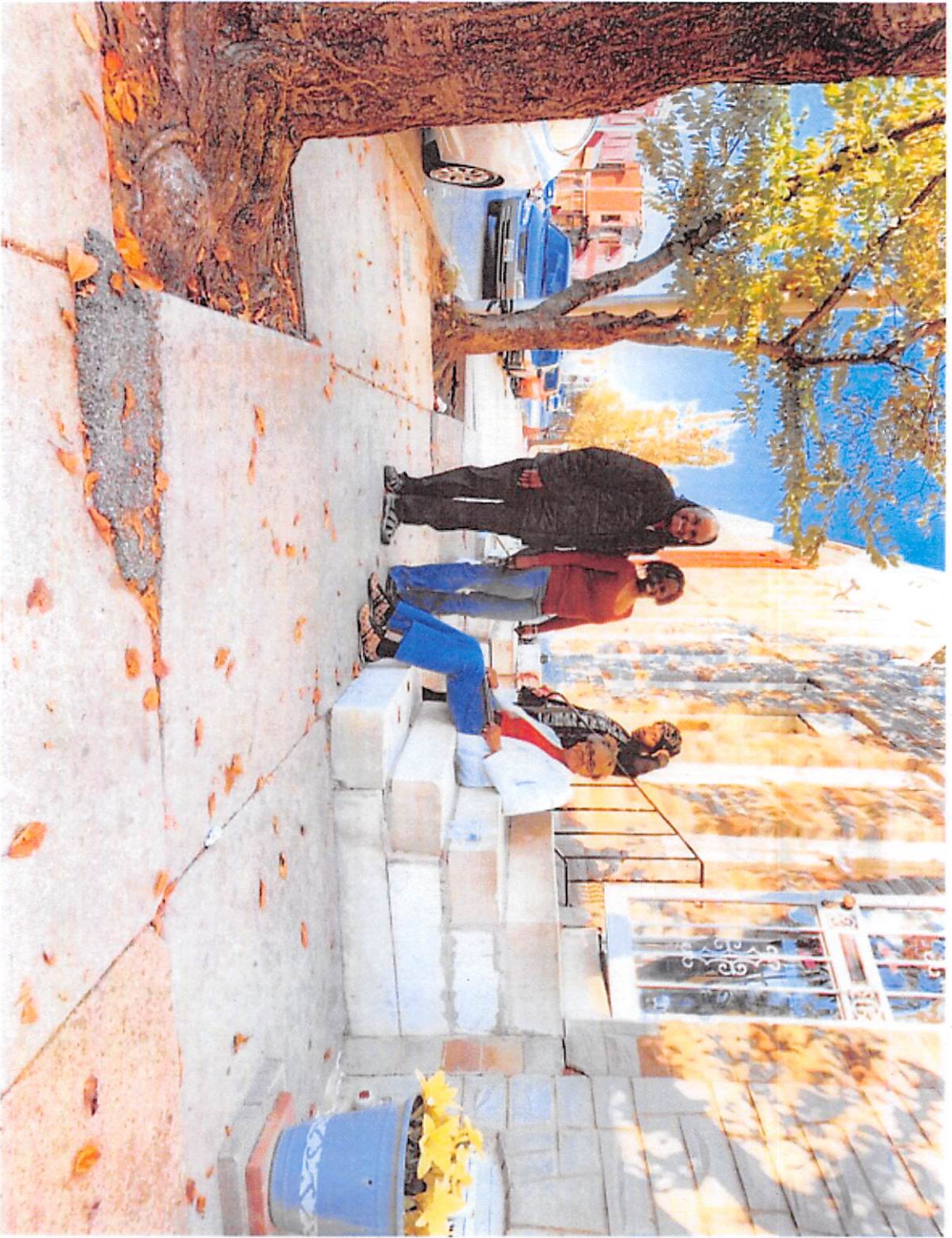
# PROJECT PARTNERS

NEW BROADWAY EAST  
COMMUNITY  
ASSOCIATION

ACT  
AMERICAN COMMUNITIES TRUST

 **OT6B**  
THE 6TH BRANCH

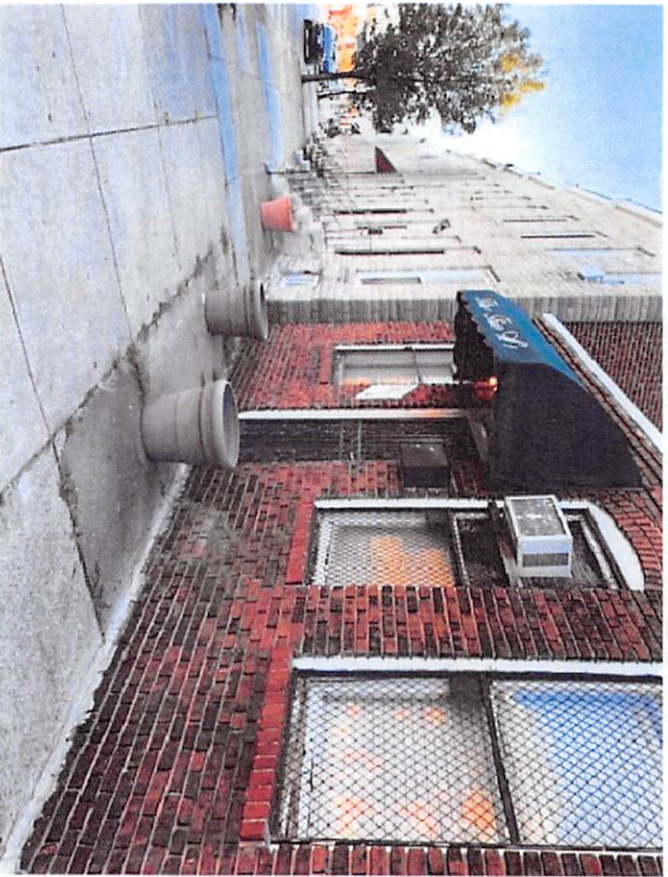
 **BLUE  
WATER  
BALTIMORE**



# FIVE BLOCKS North Gay Street to North Avenue (cont'd)



# FIVE BLOCKS North Gay Street to North Avenue (cont'd)

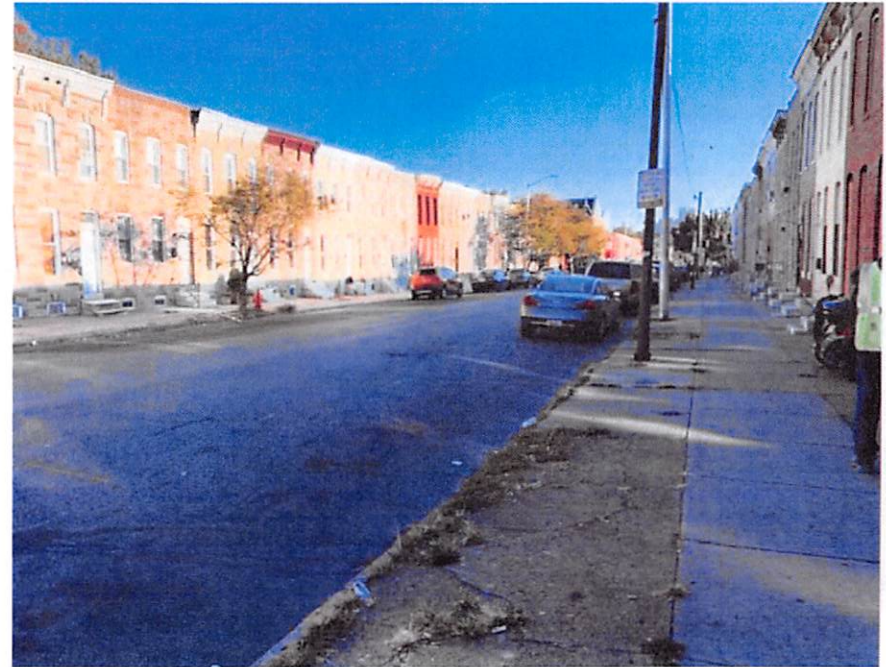


# FIVE BLOCKS

## North Gay Street to North Avenue (cont'd)



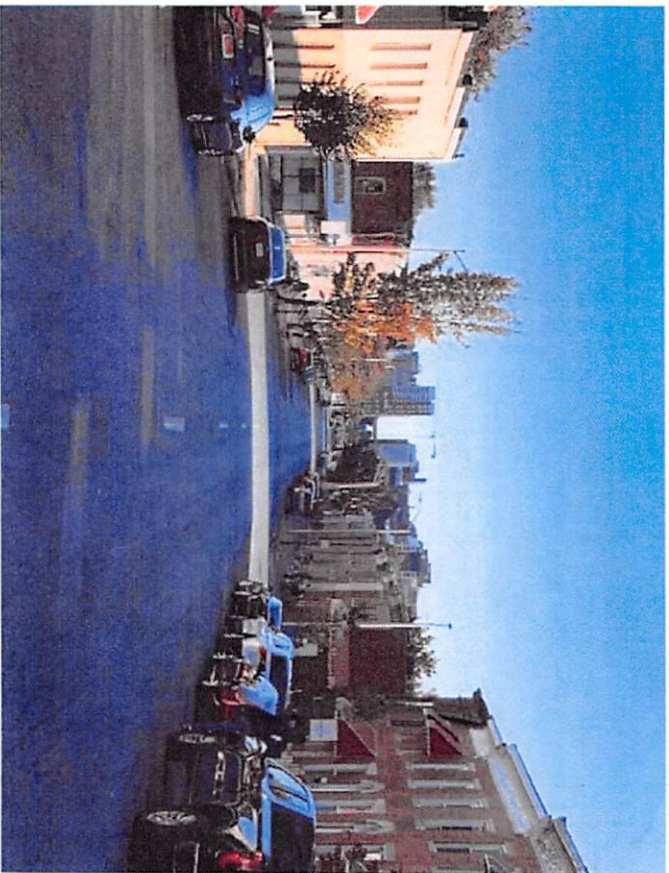
# FIVE BLOCKS North Gay Street to North Avenue (cont'd)



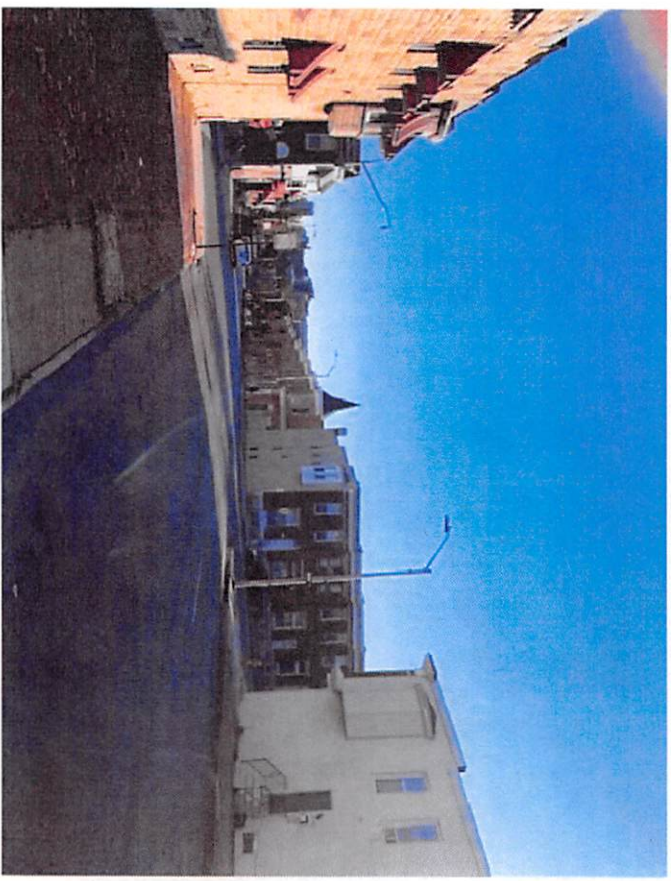
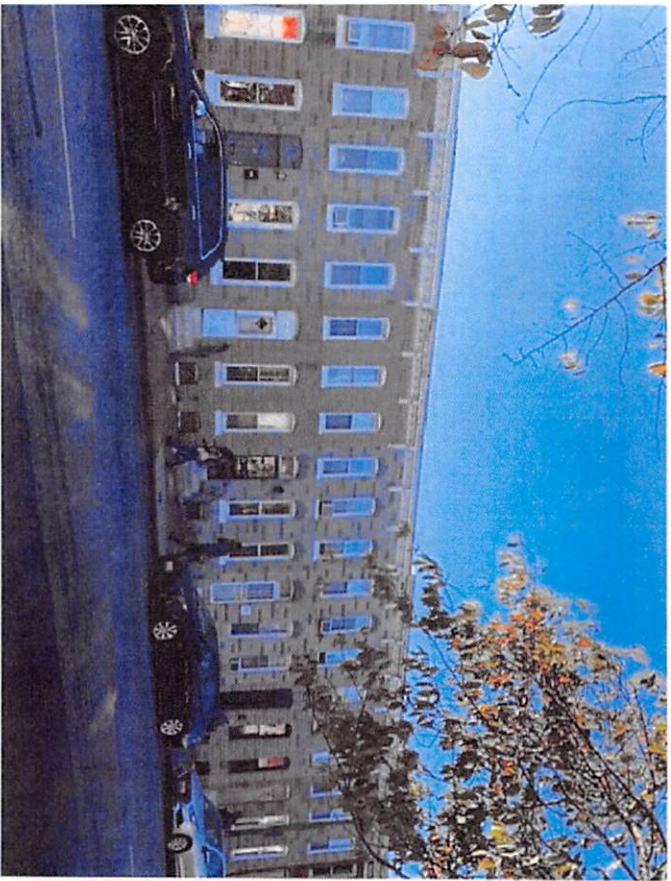


# FIVE BLOCKS

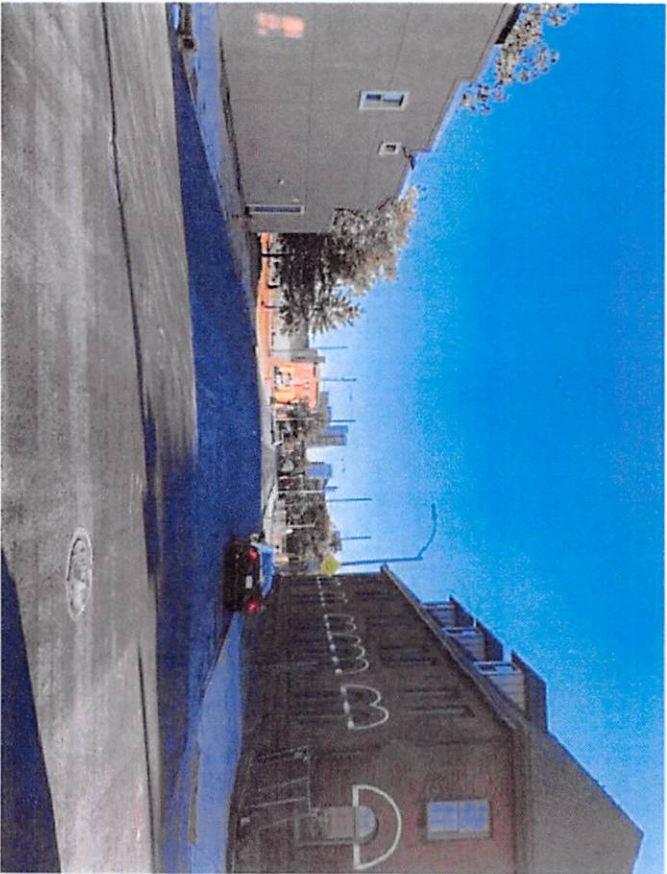
North Gay Street to North Avenue (cont'd)



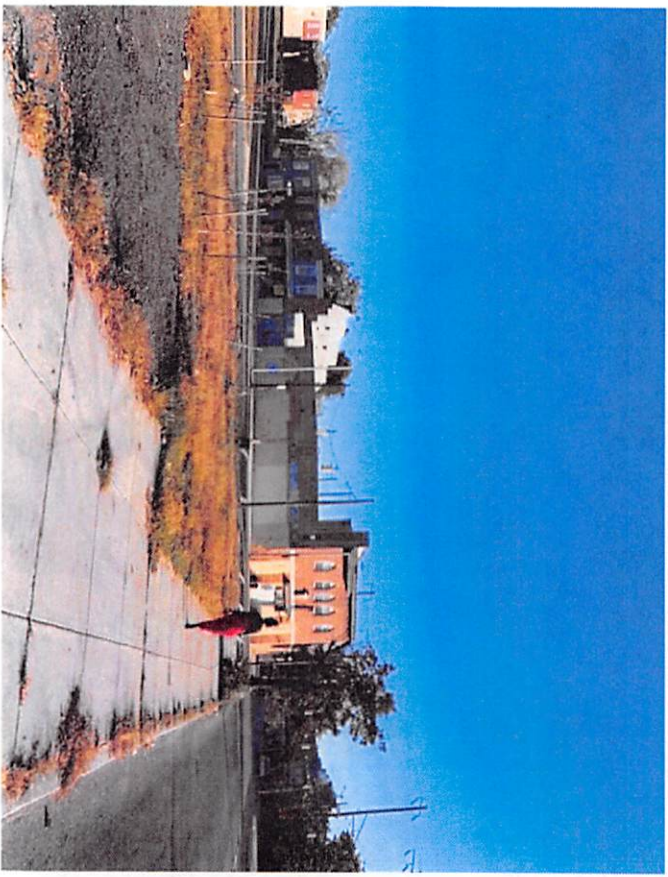
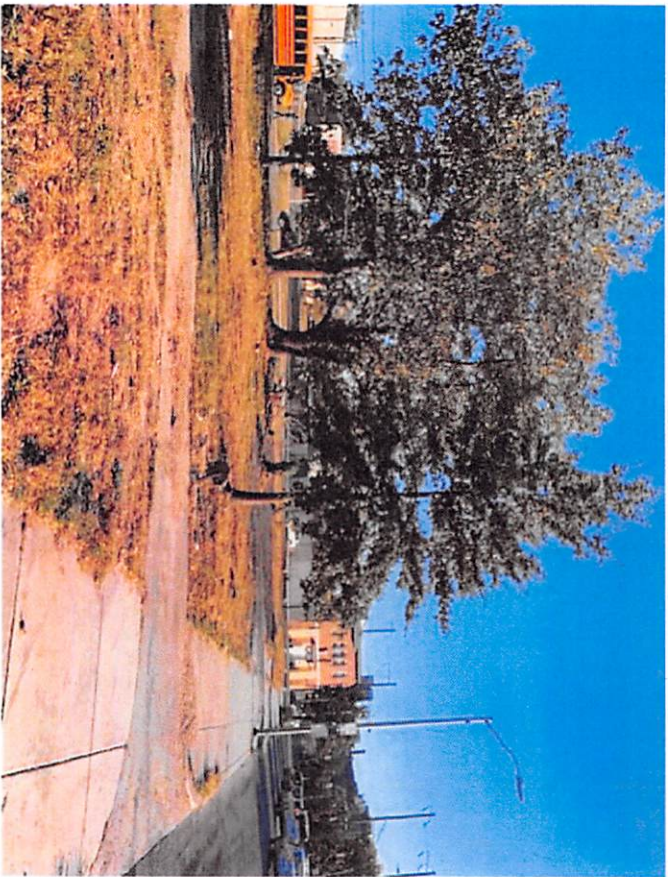
# FIVE BLOCKS North Gay Street to North Avenue (cont'd)



# FIVE BLOCKS North Gay Street to North Avenue (cont'd)

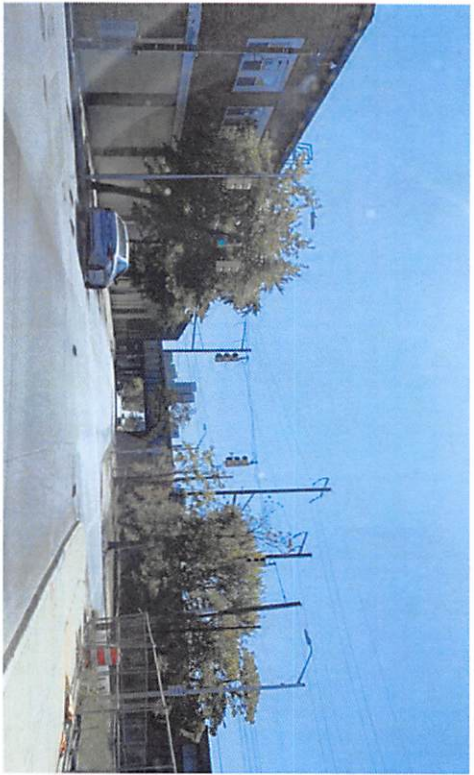


# FIVE BLOCKS North Gay Street to North Avenue (cont'd)

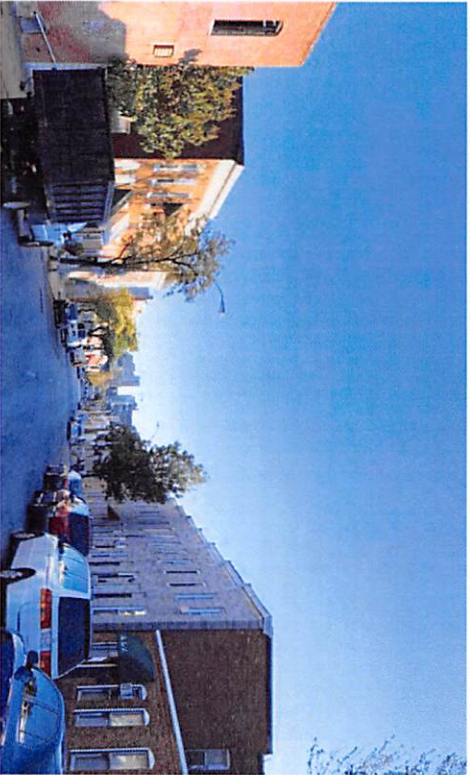
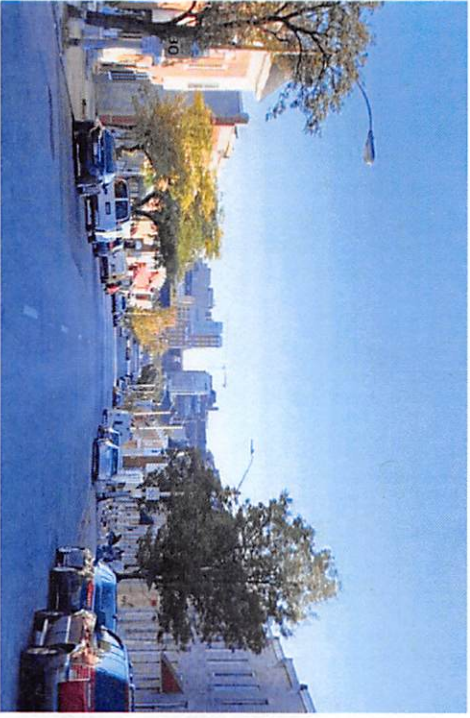


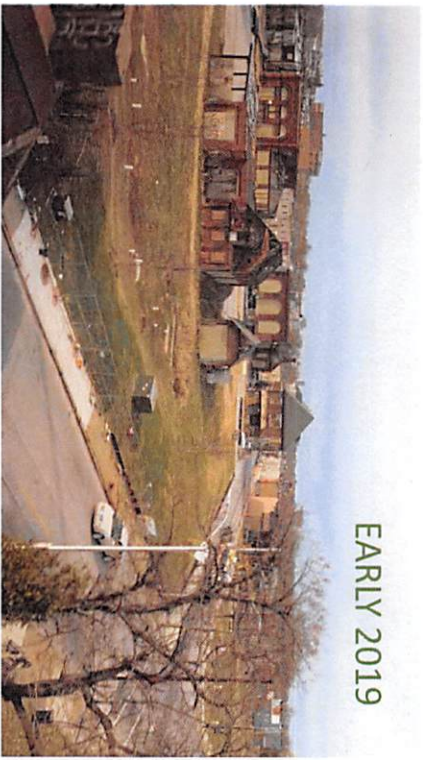
# FIVE BLOCKS North Gay Street to North Avenue





NORTH WOLFE STREET



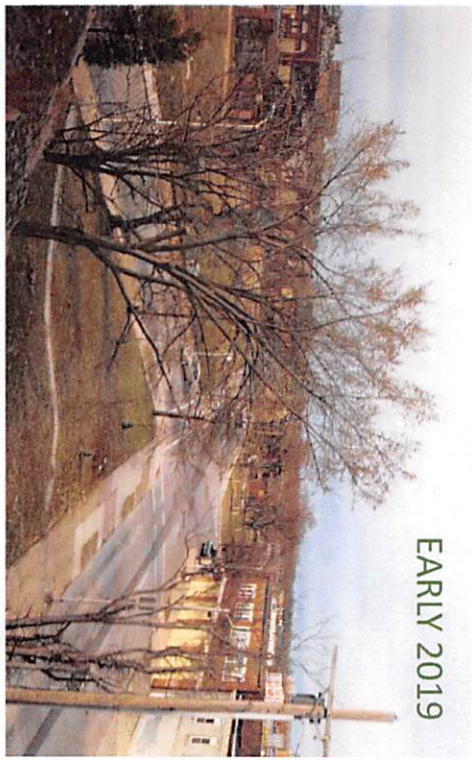


EARLY 2019



EARLY 2019

# VIEW OF NORTH WOLFE & NORTH GAY FROM AMTRAK



EARLY 2019



TODAY  
Uplift is  
underway-  
Ready for  
plantings!

# PROJECT TIMELINE

Month	Activity
October	Project approval and secure permits
November	Bid/Purchase and plant trees and shrubs
December - January	Prune existing trees
January - February	Plan tree pits and planter plantings
March--April	Plant more trees and shrubs;
	Plant tree pits and planters



# BALTIMORE FOOD HUB SIDEWALK PERIMETER

- Tree planting on perimeter of Baltimore Food Hub site with green shrubs and other greening along inside grass area
- At intersection of North Wolfe and Gay Street (Amtrak overpass) there is a traffic triangle, trees would be planted



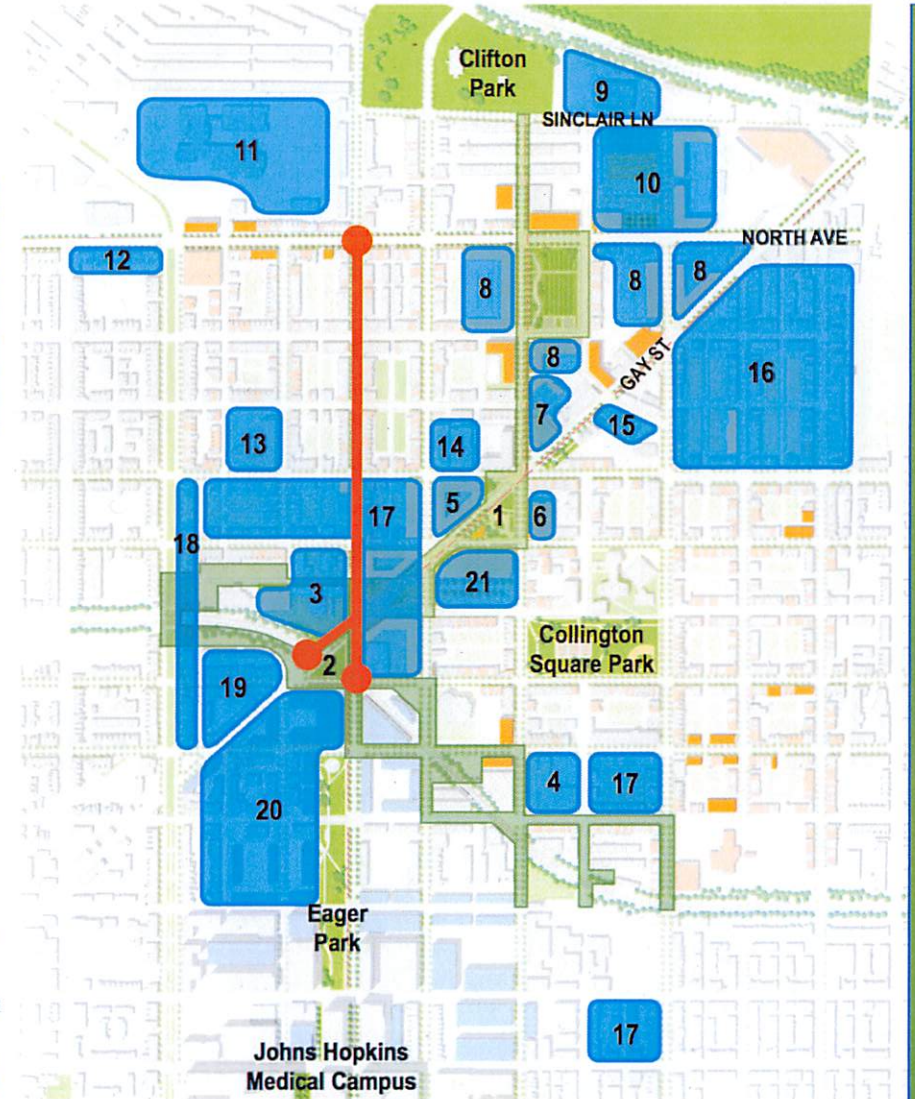
# PROJECT MAP

1. EBRP streetscape and park improvements
2. Last Mile Park
3. The Baltimore Food Hub – American Communities Trust
4. Hoen Lithograph – Cross Street Partners
5. Southern Views Housing – Commercial Development
6. Southern Streams Wellness Center – Southern Baptist Church
7. Southern Baptist Church Expansion plus Community Center
8. Additional Housing/Mixed-Use Developments – Southern Baptist Church
9. Renovated Paquin School – Lillie Mae Carroll Jackson School for Girls
10. Housing or Urban Farming – Mary Harvin Transformation Center CDC
11. Harford Heights Elementary School – 21st Century School (2020)
12. National Great Blacks in Wax Museum expansion
13. Eastern District Public Safety Center – Mary Harvin Transformation Center CDC, BCPD
14. Community Incubator and Food Hall – Southern Bridge, Broadway Eats - CDC/Community Collaboration
15. Center for Social Innovation - Humanim
16. Patterson Park Ave area residential redevelopment – Mary Harvin Transformation Center CDC
17. Focus area of proposed coalition to rehab housing – Collaborative Development
18. Hot spots of small developer residential activity – Collaborative Development
19. Renovated rowhomes - Rebuild Metro
20. EBDI - 1,040 units of housing added between 2016 and 2021
21. Mixed-Use Retail/Grocer/Housing – Mary Harvin Transformation Center CDC

Five blocks of trees & greening is indicated with



-  Target streetscape/park investments
-  Proposed projects
-  Renovated buildings that are currently vacant
-  EBRP new construction
-  EBDI future construction



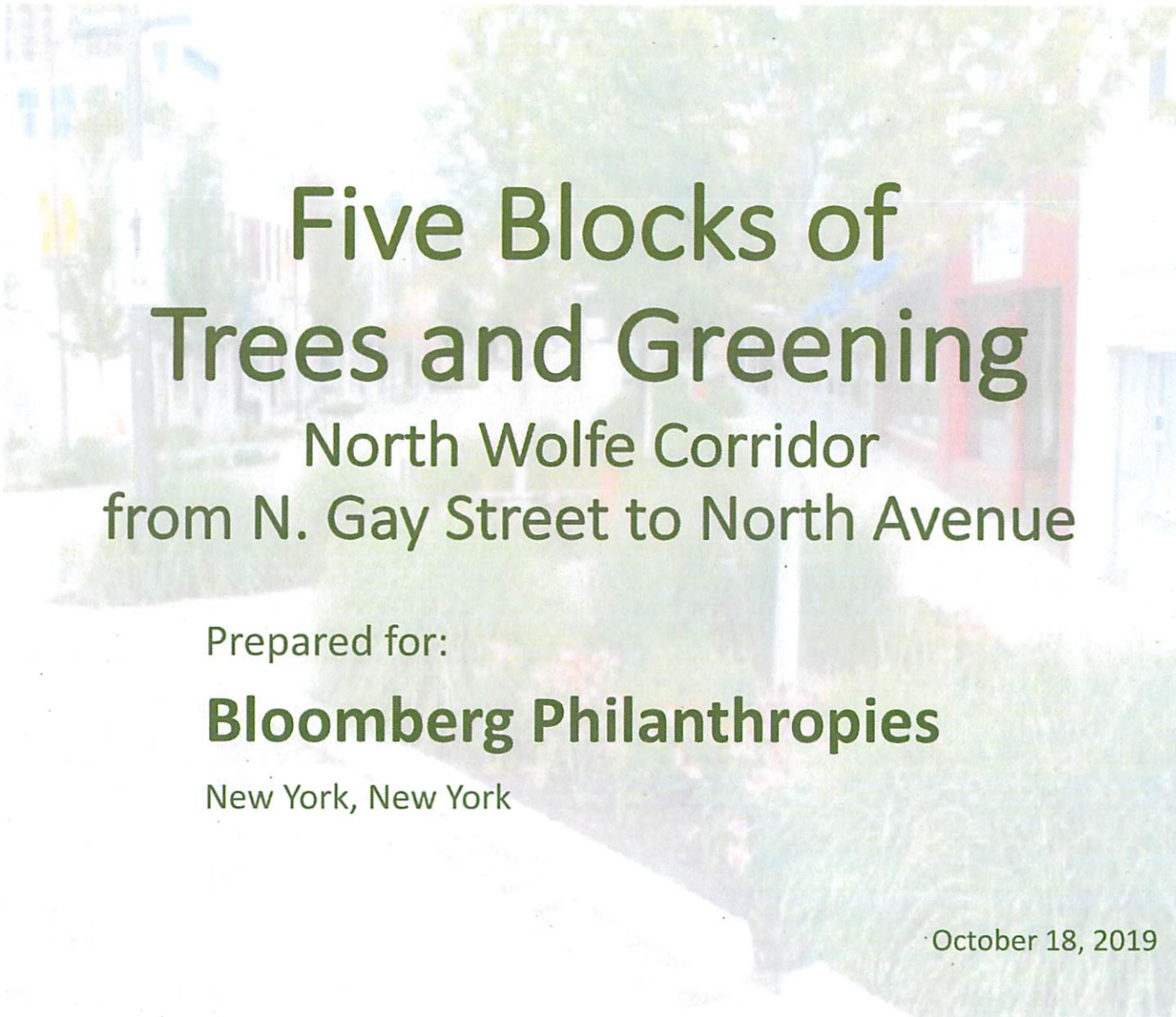
# PROPOSED PROJECT PLAN

**East Baltimore—North-of-the-tracks from The Johns Hopkins University and Medicine**

**Along N. Wolfe from N. Gay to North Avenue (five blocks)—up to 60 trees, tree pits, planters, and shrubs**

- **Baltimore Food Hub, 2 blocks (long blocks)**
  - 22 trees with tree pits and planting
  - 10 bushes
  - Including triangle at North Wolfe and North Gay Street
- **Along N. Wolfe Street, from N. Gay Street to North Avenue**
  - 10-12 trees per block (6 trees/pits per side of street)
  - 9-10 existing trees in need of pruning and pits fix up
- **Planters** (replace with more durable and plantings)
- **Sidewalk repair** (10-20 patches)
- **Equipment** (mini street sweeper-water cart)
- **Supplies**





# Five Blocks of Trees and Greening

North Wolfe Corridor  
from N. Gay Street to North Avenue

Prepared for:

**Bloomberg Philanthropies**

New York, New York

October 18, 2019

Prepared by:

**ACT**  
AMERICAN COMMUNITIES TRUST

New Broadway  
East Community  
Association

PO Box 50160  
Baltimore, MD 21211  
410.989.1607  
[www.actimpact.org](http://www.actimpact.org)